

# THE DIG ISSUE



*Autumn*  
2024

# Our Business Overview

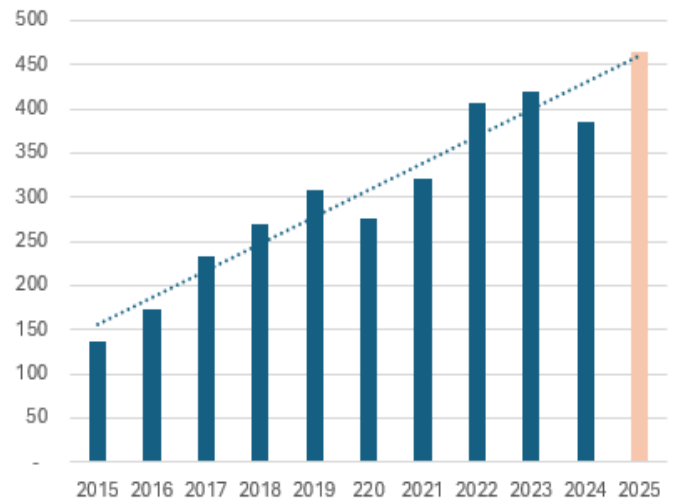
The Labour parties victory in the election has put UK housebuilding on a more positive footing. The reduction in mortgage rates and the increasing certainty around inflation has also helped provide our sector with improved sentiment and gently growing house prices. This is encouraging news for our sector.

That being said the planning system and associated red tape continues to need considerable review to generate the flow of “build ready” land for our clients (and us) to develop. There is active political intent to improve this process but it will take many months/ years to change this. Outside our sector the UK Debt and World economic position (and Wars) seems less upbeat, and clearly we will be effected by these external constraints.

Whilst the tide is turning on volumes, we believe that it will be a gradual and non linear process. The summer has been strong and we have nearly reached the heady heights of £2m of work per day (up from as low at £1.40m post the Liz Truss 45 days at the helm) that if we maintain will take us over £450m this financial year (see graph).

The order book today stands at £800m and this is only secured by offering a safe, quality product and a customer focused build team. Please let’s all keep this up with a happy team and a “can do” mentality.

MV Kelly Turnover (millions)



Wins this quarter represent 2000 homes; and 14 km of new adopted road.

Sites of particular note include more work at Darwin Green with our friends at Barratts; and a new phase at Congleton with Castle Green. The work the team are delivering for both clients is well recognised. The same could be said for Vistry, Taylor Wimpey, Persimmons, Bloors, Allison, Redrow and Davidsons who have all added significant awards to our business this period. Thanks to them all!

## Solar Panels

Our goal is to minimise our carbon footprint and integrate eco-friendly initiatives into all our operations!

We are thrilled to share that we have now installed solar panels at our headquarters in Shirley.

Despite the weather, in just one month, we have reduced 1,033kg of CO2 emissions, which is equal to planting 63 trees.

MV Kelly is committed to extending the installation of solar panels to all our office locations!



# Our Health and Safety



## DON'T WALK BY!

It's crucial to remain alert. Remember, If you see something, say something.

Use our new QR code to tell us what's going on whether on site or in an office for any general concerns.

This could involve sharing positive practices for others to adopt or flagging any hazardous situations that could lead to accidents if left unaddressed.

We will never be complacent in our approach to safety and by others alerting us to issues means we will continuously improve our workplace environment for everyone.

## Working in Occupied Areas and Live Roads

Working in occupied areas or on live roads requires extra level of diligence. The safety of everyone, our workers, clients, and the general public is our top priority.

Always use a banksman when moving through occupied areas with plant, as it prevents accidents and protects the public.

Install clear appropriate signage along with adequate segregation to clearly define work zones and keep unauthorised people out of potentially dangerous areas.

Ensure sufficient haunching on driveway kerbs and around raised ironworks to prevent slips, trips and falls.



## Health and Safety Poster Competition

We invited children of all ages to participate in our "Stay Safe on the Site" poster competition to raise awareness about safety on construction sites.

And the results are in...

MV Kelly would like to say congratulations to Annie aged 9 coming in first place!

A big thank you to all who participated!

# Making A Difference

## The Prince's Trust

The Prince's Trust, in conjunction with the West Midlands Police, visited our headquarters in Shirley to request materials for the refurbishment of St. Andrew's Peace Garden. Following a compelling presentation, we couldn't say no!

Over two weeks, students dedicated themselves to revitalising the Peace Gardens at St. Andrew's Church, earning B-Tech certificates in the process.

Gary Chapman, Manager of the Prince's Trust, said:

*"The support MV Kelly has provided has made a genuine difference to the lives and future prospects of every student on The Prince's Trust Team Programme in Chelmsley Wood."*

We are really pleased our staff used their volunteering day to support the charity and community.



## The Future of Construction

Witnessing the enthusiasm of James, who resides near one of our sites, is truly heartwarming. His passion for construction has made him a local favourite among our site workers, who have presented him with his very own MV Kelly Excavator!

*"James absolutely loves his MV Kelly hard hat and high vis jacket. He wears them each evening on his daily walk to say "goodnight" to the construction vehicles at the MV Kelly site."*

*"Of course, the icing on the cake for James is the incredible MV Kelly Hitachi excavator! James is absolutely besotted by it and tries to take it with him wherever he goes. We will treasure this wonderful gift forever." - James's Mum*

## Vans For Anchor Point

MV Kelly have donated two vans to Anchor Point Betel, a charity dear to our hearts.

These vans will assist Betel in providing transportation for the individuals they support to commute to and from work.

We are proud to support Anchor point and look forward to continuing our partnership with Betel.



# Our Plant and Fleet

## Transit Custom Vans

The first wave of deliveries of our brand new Transit Custom vans kicked off this July. Packed with cutting-edge safety features and enhanced comfort for drivers, this latest model is set to impress.



## Idling Campaign

Our 2024 anti-idling campaign has kicked off to a great start, showing a remarkable 15% improvement in the first two months. This progress puts us on track to reduce our carbon output by at least 250 tonnes in the forthcoming year.

In addition, we will soon be testing the new plug-in hybrid 6-seat Ford Custom to explore its potential in further lowering our vehicle emissions.



## GPS Machine Control

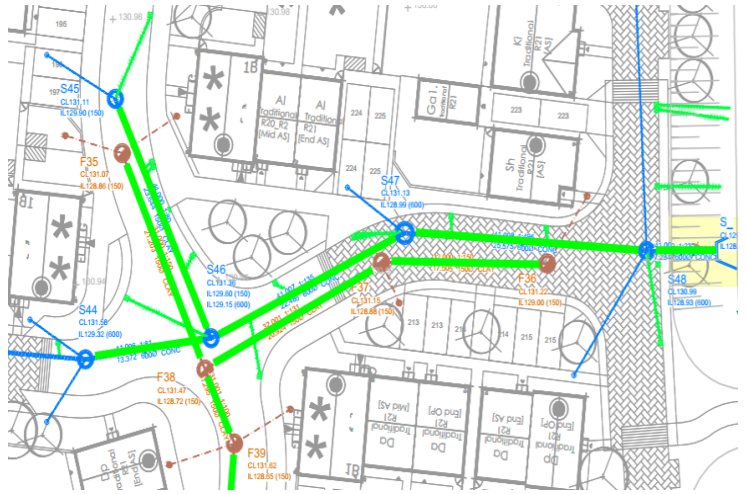
We are thrilled to collaborate with Leica in testing the new iCG120 machine control system, marking its debut in the UK.

The revamped system enhances receiver functionality, eliminating the necessity to detach the control module, thus improving reception and reliability.



# On The Ground

We ensure that all road drainage systems are thoroughly surveyed before laying base and binder courses. This proactive step helps identify and fix defects early, avoiding costly asphalt excavation and enabling timely road repairs to meet client deadlines. Our inspections cover all adoptable mains, gullies, and lateral connections, with our Technical Team reviewing footage to guarantee compliance with water authority and local highway standards. Our expertise accelerates site approvals, preventing delays and minimising impact on residents, clients, and our reputation.



For final road adoptions, authorities typically require surveys less than 6 months old. To avoid costly repeat visits, ensure all routes are ready for CCTV crews. Please help by providing the team with clear route mark-ups, and clean all manholes and gullies before the survey. Coordinating visits with site conditions can significantly reduce expenses and improve the efficiency of this process.

To minimise installation defects, we conduct regular air tests throughout the system. Catching issues before they become costly and less accessible.

In the Wastewater sector Air Testing certificates are required for all foul water lines.

Pre-start meetings with local Inspection Managers are essential to ensure teams understand local regulations and perform these tests consistently.



## Permit To Break Ground Board



**DANGER**  
**Underground services**

SCAN THE QR CODE TO SEE SERVICE  
DRAWINGS AND PERMITS



Permit Number: \_\_\_\_\_

**MVKELLY**  
CIVIL ENGINEERING

**DIG SMART!**  
**DIG SAFE!**

SCAN ME

Email: [taylor@mpy.nt@mvkelly.co.uk](mailto:taylor@mpy.nt@mvkelly.co.uk)  
Password: 10096access!

## QR Codes on Site

Quick, simple and effective!

We are trialling QR codes on our sites making a variety of information more accessible to our workers.

Scan our QR Codes to access service drawings and site permits, to collect details and leave notes on specific plots, and to report near misses.

# Our Wellbeing

## Forming Connections

Connecting with others can enhance our sense of closeness and value in relationships. Socialising varies among individuals; some may prefer quiet interactions with a single person, while others enjoy larger gatherings. Online connections, phone calls, or written correspondence can all be meaningful ways to engage with others also.

Positive relationships play a vital role in mental well-being as they:

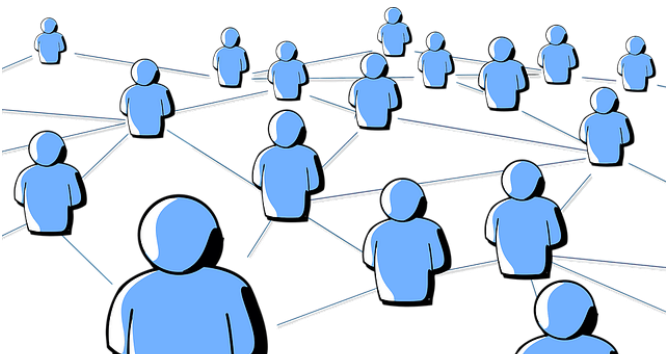
- Foster a sense of belonging and self-esteem.
- Enable sharing of positive experiences.
- Offer emotional support and the chance to support others.

Here are some tips to strengthen relationships:

- Step out of your comfort zone by initiating conversations with new people.
- Dedicate time to connect with colleagues and truly listen to their concerns.
- Opt for phone calls over messages to deepen communication.
- Plan outings with old friends to reconnect.
- Prioritise quality time with loved ones by engaging in activities together.
- Extend support and companionship to friends or family in need.
- Consider volunteering to expand your social circle.

Technology is great for maintaining relationships, especially over long distances. However, avoid relying solely on it as personal interactions are invaluable.

For additional insights on fostering connections, explore resources provided by MIND.



## The Benefits of Volunteering

**Personal Growth and Skill Enhancement:** Offering chances to acquire new skills or polish existing ones.

**Increased Social Connections:** Alleviating feelings of isolation and boosting emotional well-being.

**Improved Mental Health:** Easing stress and anxiety through meaningful involvement and social interaction.

**Personal Satisfaction:** Cultivating a profound sense of purpose and satisfaction from assisting others.

We actively encourage employees to volunteer through our Volunteering Policy. We are incredibly proud of those who give their time and energy to positively impact peoples lives and make a difference.

## Modern Slavery

Within the coming month, The Board will review our approach to modern slavery and publish a statement for the year.

Construction projects with complex supply chains and transient workers pose challenges in identifying vulnerable workers. To address MV Kelly site concerns, contact a director at any office. Employees can report through the whistleblowing policy which can be found on our website.